

# Atomic Absorption Spectrophotometer

MA 2081



## Characteristics

- 4 lamps and optional 6-lamps. Lamps automatically switch, energy balance
- Multiple lamps warm-up at the same time, you can save time. Optional deuterium lamp buckle background and high performance element lamp
- The instrument automatically stores the set conditions, One-Button to complete the scanning peak
- Data reports can be saved and printed in a variety of formats, to facilitate data query and comparison
- English software with an interface with multi-function window, Make the operation easier, Real-time monitoring data changes
- Advanced and reliable multi-security protection system, Automatic detection, alarm, such as pressure is insufficient, Leakage, flameout and other abnormal conditions

## Optical System

Wavelength range	185nm-900nm
Grating groove density	1800 lines
Monochromator	Czerny-Turner
Spectral Bandwidth	0.2nm,0.4nm,1.0nm,2.0nm,multi-speed automatic switching
Wavelength accuracy	$\leq \pm 0.1\text{nm}$
Wavelength repeatability	$\leq \pm 0.025\text{nm}$
Baseline drift	0.003ABS/30min (Static) 0.005 ABS/15min (Dynamic)
Detector	Japan Hamamatsu photomultiplier
Resolution	Cu324.7nm Wavelength 0.2nm Half width 0.2nm+0.01 nm

## Light Source System

Lamp holder	4 lamp auto switch (6 lamp optional)
Lamp power supply mode	400Hz 1/4 Duty ratio
Lamp current adjustment range	0-10mA (Software Adjust)

## Atomic system

Characteristic concentration (Cu)	0.025 $\mu$ g/ml/1 %
Detection limit (Cu)	0.006 $\mu$ g/ml
Burner	0.5mm $\times$ 100mm All-titanium burner
Precision	RSD $\leq$ 0.5%
Sprayer	Metal sleeve ,High efficiency glass sprayer
Room Spray	Corrosion-resistant plastic spray chamber
Safety measures	With a variety of automated security features, acetylene gas leakage alarm, shut down the system

## Analysis methods

Measurement	Air - acetylene flame method, hydride generation atomic absorption spectrometry,
Concentration calculation	Automatic working curve fitting, automatic calibration sensitivity, automatically calculated concentration levels.
The number of repeated measurements	1 to 99, automatic calculation of average concentration, standard deviation, relative standard deviation.
Print results	Print the final stages of test data or analysis. The results can be exported into Excel worksheet.
Software Environment	Windows XP/vista operating system, the English professional software

Select the elements of analyze X

### Periodic Table

■ Air - acetylene
■ Hydride
■ Graphite furnace

H 氢																	He 氦	
Li 锂	Be 铍											B 硼	C 碳	N 氮	O 氧	F 氟	Ne 氖	
Na 钠	Mg 镁	Air - acetylene	Ti 钛	V 钒	Cr 铬	Mn 锰	Fe 铁	Co 钴	Ni 镍	Cu 铜	Zn 锌	Al 铝	Si 硅	P 磷	S 硫	Cl 氯	Ar 氩	
K 钾	Ca 钙	Sc 钪	Ti 钛	V 钒	Cr 铬	Mn 锰	Fe 铁	Co 钴	Ni 镍	Cu 铜	Zn 锌	Ga 镓	Ge 锗	As 砷	Se 硒	Br 溴	Kr 氪	
Rb 铷	Sr 锶	Y 钇	Zr 锆	Nb 铌	Mo 钼	Tc 锝	Ru 钌	Rh 铑	Pd 钯	Ag 银	Cd 镉	In 铟	Sn 锡	Sb 锑	Te 碲	I 碘	Xe 氙	
Cs 铯	Ba 钡	La-Lu 镧系	Hf 铪	Ta 钽	W 钨	Re 铼	Os 锇	Ir 铱	Pt 铂	Au 金	Hg 汞	Tl 铊	Pb 铅	Bi 铋	Po 钋	At 砹	Rn 氡	
Fr 钫	Ra 镭	Ac-Lr 锕系	Rf 钨	Ha 铪	Sg 钆	Bh 铪	Hs 铪	Mt 铪	Ds 铪	Rg 铪	Uub 铪	Uut 铪	Uuq 铪	Uup 铪	Uuh 铪	Uus 铪	Uuo 铪	
		La 镧	Ce 铈	Pr 镨	Nd 钕	Pm 钷	Sm 钐	Eu 铕	Gd 钆	Tb 铽	Dy 镝	Ho 铥	Er 铒	Tm 铥	Yb 镱	Lu 镱		
		Ac 锕	Th 钍	Pa 镤	U 铀	Np 镎	Pu 钚	Am 镅	Cm 镆	Bk 锫	Cf 锿	Es 镱	Fm 镆	Md 镆	No 镎	Lr 镎		
																Enter		

## Host parameters

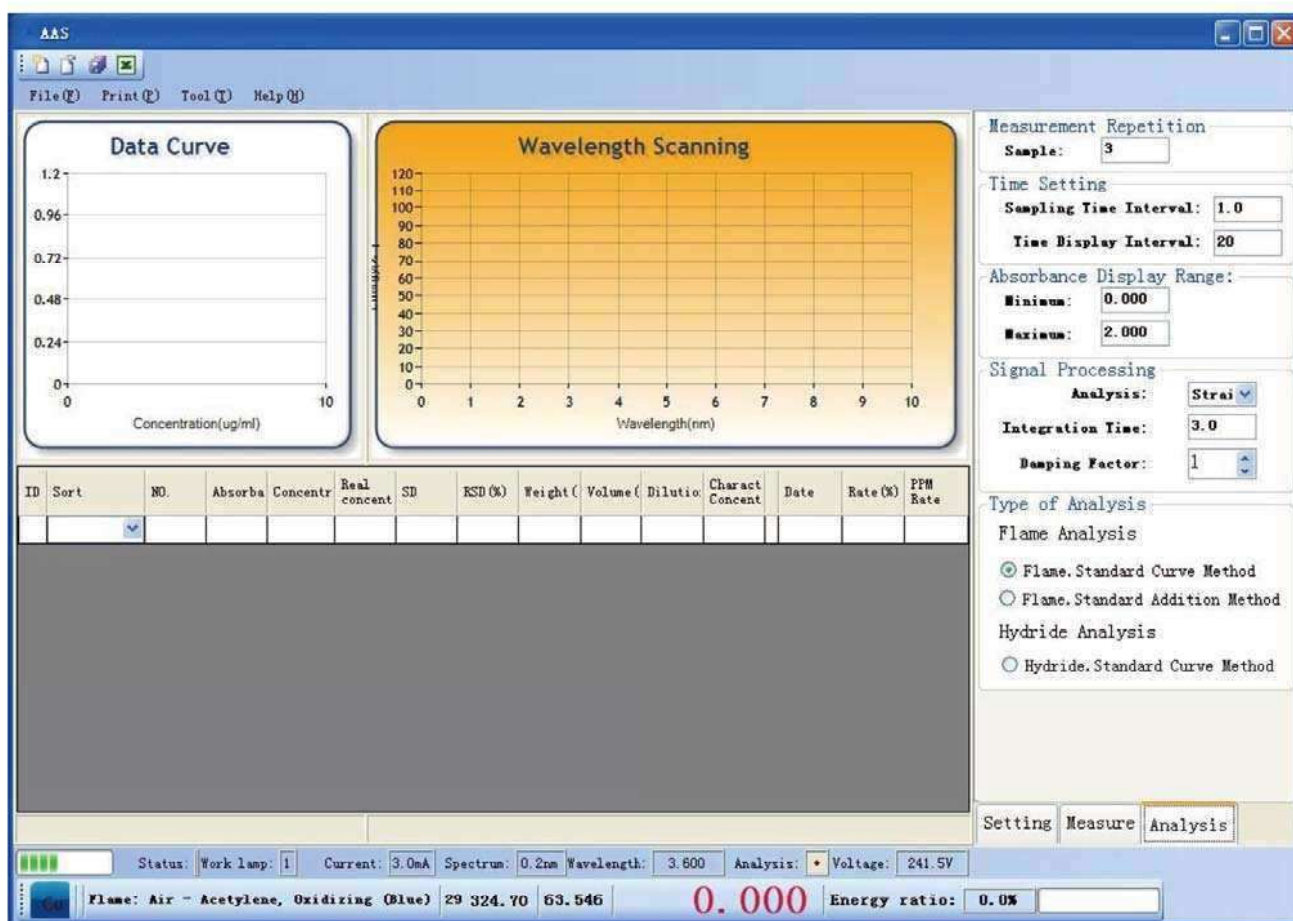
Power supply	AC 220V/50HZ
Power	150W
Weight	70kg
Dimension	1000X 400 X 470mm
Operating temperature	10~35°C
Working humidity	≤80%

## Standard Accessories

Host  
 Low noise oil-free air compressor  
 3PCS hollow cathode lamps  
 Operating software

## Optional Accessories

Hydride generator  
 Graphite furnace system



Marks Scientific Solutions Inc.,  
 GA, USA  
 Phone: +1 770 814 6427  
 email: info@marksscientific.com

Faith Can Move Mountains